

SONY.

Car Stereo Service Bulletin

Sony Service Company - Technical Services
A Division of Sony Corporation of America
Sony Drive, Park Ridge, New Jersey 07656

Model: CDX-A55/A55RF/U300/U300RF/U400D **No. 280**

Subject: "ERROR" or "RESET" Appears On The Controller's Display, And/Or The CD Changer Does Not Operate. **Date:** April 30, 1993

Symptom:
(65)

The display of the CD changer controller may show "ERROR" or "RESET" and the CD changer may not operate. If the changer does operate, it may exhibit erratic functions.

Solution: Install the Service Kit listed below according to the following instructions.

REF	DESCRIPTION	PART NUMBER
-	SERVICE KIT	X-3366-054-1

CSA - 14 CD Player

Applicable Serial Numbers*

* The SL gear, EV gear, and rack assembly improvements should be done on all units regardless of serial number

Model	Serial Numbers
CDX-U300	up to 180201
CDX-U300RF	up to 130801
CDX-U400D	up to 100700
CDX-A55	up to 146057
CDX-A55RF	up to 136901



PRINTED ON RECYCLED PAPER

(Continued)

Reference: Technical News ME-92033
Autoflagged - NO

PRINTED IN U.S.
CSA-14493-1

Procedure

1- Referring to figure #1 as a guide, label the 3 small plastic bags with the letter "B", "C", or "D" by using a ball point pen or other suitable marker (the large plastic bag is bag "A"). This makes it easier to find the individual parts as they are called out in the instructions.

2- Remove the EV chassis block assembly from the main chassis by following the disassembly instructions in the service manual.

3- Chucking Plate Improvement

Note: During this procedure, be careful not to hold the EV chassis from the points indicated as items # 16 in figure 2. This will prevent bending of the DH springs.

3A- Remove and discard the split washers (figure 2, item 2) which secure the chucking plate bracket to the "R" service arm assembly (figure 2, item 26). If there are additional plastic washers found beneath the split washers, discard them also.

3B- Replace the chucking plate (figure 2, item 1) and the chucking plate bracket (figure 2, item 17) with the improved ones from the kit (bag "A").

3C- Secure the chucking plate and chucking plate bracket with the improved split washers from the kit (these are the 2 smaller washers found in bag "C").

4- KW Gear Torque Improvement

4A- Remove and discard the split washer and and "F"-spring (figure 3, items 3 & 4) from the KW gear assembly.

4B- Secure the KW gear assembly with the improved "F"-spring and split washer from bag "D". **Make sure that the peak of the "F"-spring is facing towards the split washer.**

5- SL Gear Improvement

5A- Remove and discard the 2 split washers (figure 2, items 7) which secure the slide lever, then remove the side lever.

5B- **Note the position of the SL gear** (figure 3, item 5), then remove and discard the SL gear and the split washer (figure 3, item 6) which secures it to the EV chassis. **Be careful not to lose the brass bushing mounted to the SL gear.**

5C- Mount the improved SL gear (bag "A") onto the EV chassis in the **same position as the original SL gear**, and secure it with a split washer from bag "B".

5D- Install the brass bushing onto the post on the new SL gear, then re-install the slide lever and secure it with the 2 large split washers in bag "C".

6- EV Gear And Rack Assembly Improvement

- 6A- Remove the screw which secures the driver board (figure 2, item 18) and move the board away from the EV gear assembly (figure 3, item 19).
- 6B- Remove the screw which secures the EHS flex board (figure 2, item 20).
- 6C- Remove the 2 screws which secure the EV gear assembly and lift the assembly out of the EV chassis.
- 6D- Remove the worm wheel and split washer (figure 3, items 21 and 22) from the EV gear assembly. **Do not discard these parts; they must be re-used.**
- 6E- Remove and discard the EV gear and split washer (figure 3, items 8 and 9) from the EV gear assembly.
- 6F- Install the improved EV gear (bag "A") and split washer (bag "B") onto the EV gear assembly.
- 6G- Install the worm wheel and split washer which were removed in step 6D onto the EV gear assembly.
- 6H- Install the EV gear assembly back into the EV chassis and secure with 2 screws.
- 6I- Secure the EHS flex board and the driver board.
- 6J- Install the EV chassis back into the main chassis.
- 6K- Rotate the elevator motor shaft until any slot on the EV gear is facing straight up (see inset, figure 5).
- 6L- Install the improved rack assembly (figure 5, item 14; bag "A"). There should be approximately 1mm of space between the bottom of the EV chassis and the main chassis. After tightening the screw which secures the rack assembly, verify that the slot on the EV gear is still facing straight up (see inset, figure 5).

7- KMZ Lever Torque Improvement

- 7A- Remove the heat sink from the left side of the chassis.
- 7B- Remove the magazine compartment cover plate.
- 7C- Remove the worm wheel and split washer (figure 4, items 23 and 24). Discard the split washer
- 7D- Remove and discard the split washer (figure 4, item 11) and lift the KMZ lever assembly from the chassis. Also, discard the round washer (figure 4, item 10) found beneath the KMZ lever assembly.

7E- Remove the split washer, KS gear, and "F"-spring (figure 4, items 13, 25, and 12) from the KMZ lever assembly. Discard the "F"-spring and split washer.

7F- Install the improved "F"-spring (bag "D"), the KS gear, and the "E" ring (bag "D") onto the KMZ lever assembly. Make sure that the peak of the "F"-spring faces upward towards the KS gear.

7G- Install the improved large round washer (bag "D") around the post to which the KMZ lever assembly is mounted.

7H- Install the KMZ lever assembly onto the post, and secure it with an improved split washer (bag "B").

7I- Install the worm wheel and secure it with an improved split washer (bag "B").

7J- Install the magazine compartment cover plate.

7K- Install the heat sink.

8- Final Assembly And Check-out

8A- Install the chassis top cover. Use an improved screw (figure 5, item 15; bag "A") to secure the top cover to the improved rack assembly. Apply locking compound to all of the screws which secure the chassis top cover.

8B- Connect a CD changer controller or the Unilink Jig to the unit and check for normal operation. **IMPORTANT! Ambient light in the vicinity of the unit may cause the photo transistor sensors to be falsely triggered which can and will cause improper operation of the elevator and disc loading mechanisms. Blocking the ambient light from the sensors will prevent the troubleshooting of problems which do not exist.**

8C- Install the top, bottom, and front panels, and verify proper operation again.

9- Preparing The Unit For Shipment (refer to figure 6)

9A- Wrap the caution label around the unit and secure it with tape.

9B- Insert the 2 transport screws (bag "A") into the 2 plastic holder strips (bag "A").

9C- Lock the EV chassis by screwing in the 2 transport screws from the bottom side of the unit. Tape the plastic strips to the caution label.

9D- Advise the customer to cover up the transport screw access holes in the bottom cover with the supplied labels after the transport screws have been removed.

(Continued)

SERVICE KIT FOR CDX-
X-3366-054-1

	PARTS NUMBER	PARTS NAME	Q'ty
A	①	3-371-533-03 SHEET (TRANSPORT SCREW)	2
	②	3-380-759-02 PLATE (C), CHUCK	1
	③	3-364-418-04 GEAR (SL)	1
	④	X-3362-488-4 RACK (ASS'Y)	1
	⑤	3-364-424-02 GEAR (BV)	1
	⑥	3-371-503-11 SCREW (TRANSPORT)	2
	⑦	7-685-781-09 SCREW +PTT 2×4(S)	1
	⑧	3-371-098-02 LABEL, SCREW CAUTION	1
	⑨	3-371-953-11 LABEL (TRANSPORT SCREW)	1
	⑩	3-371-953-21 LABEL (TRANSPORT SCREW)	1
		⑪	[only for CDX-U400D(silver)] BRACKET(CP) ASS'Y
	⑫	X-3364-480-2 PLASTIC BAG	3
	⑬	SLIP	1
B	⑬	3-377-719-01 WASHER, POLYETHYLENE	4
C	⑬	3-377-720-11 WASHER, POLYETHYLENE	2
	⑬	3-342-940-01 WASHER (M)	2
D	⑮	3-377-719-11 WASHER (M)	1
	⑯	3-384-276-01 RING, RETAINING	1
	⑰	3-316-308-01 WASHER	1
	⑱	3-364-387-11 SPRING (F)	2

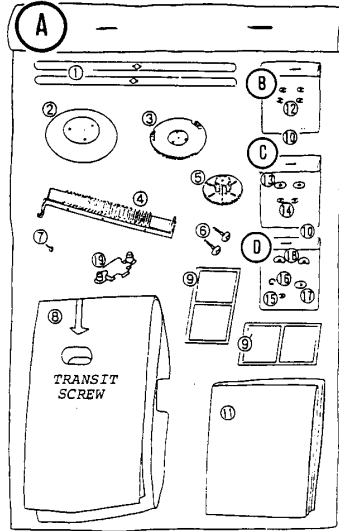


FIG. 1

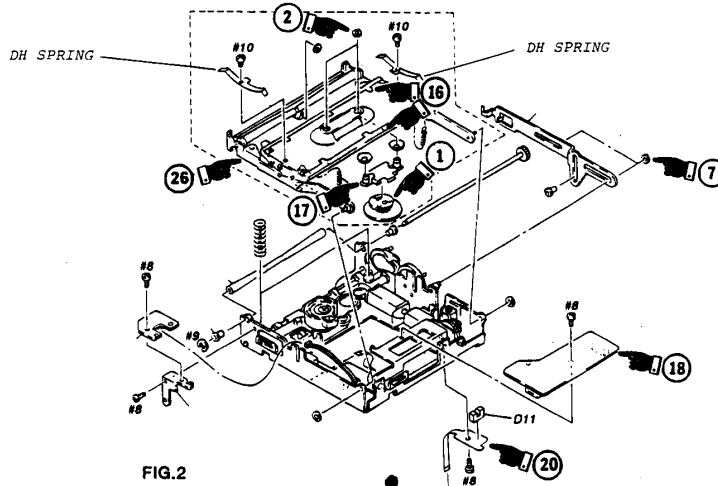
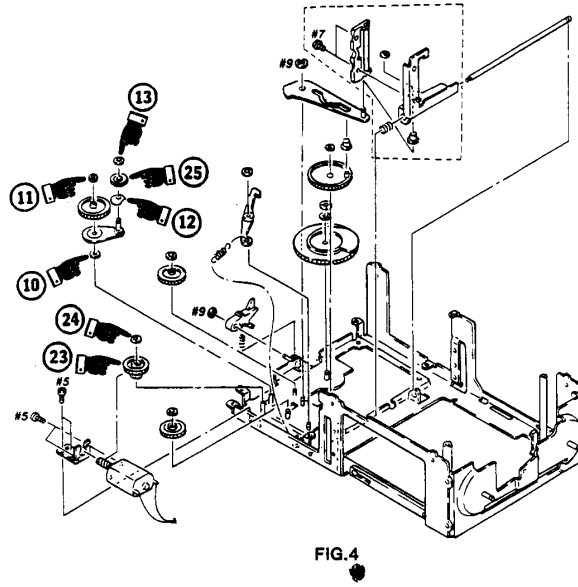
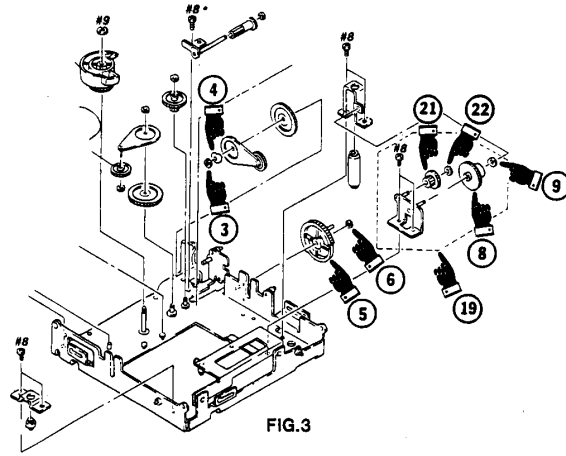


FIG. 2

(Continued)



(Continued)

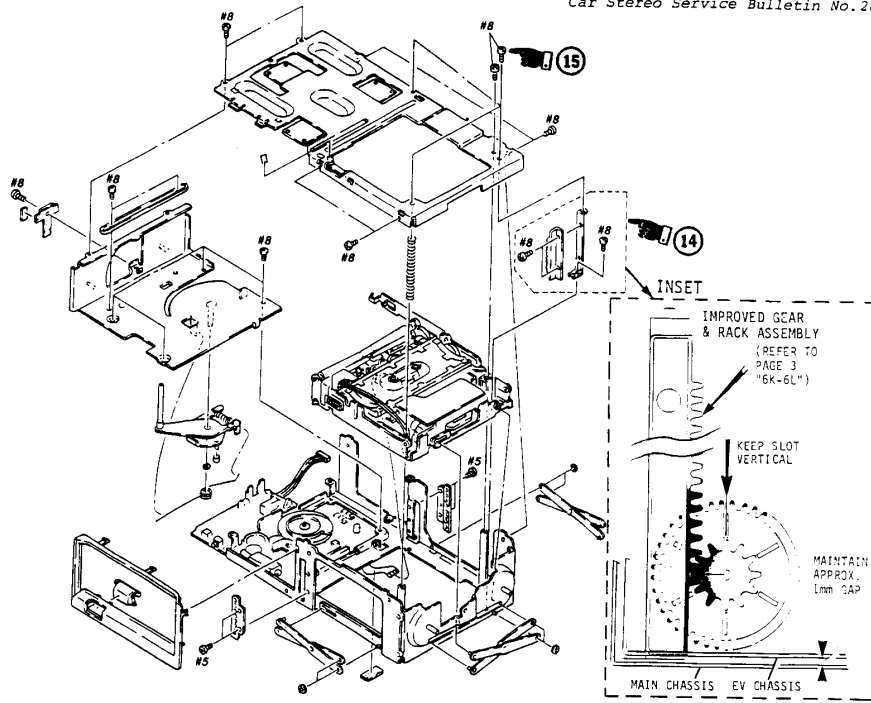


FIG.5

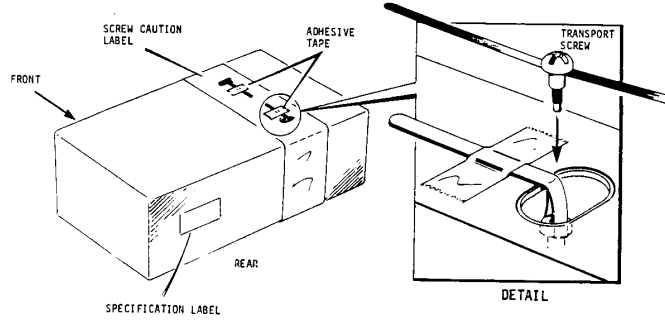


FIG.6